

## KC1 BOCHELLI IN POLIPROPILENE FLAT SPRAY PLASTIC TIPS ORIFICIOS DE PULVERIZACIÓN DE SALIDA PLANA



### Caratteristiche

La sua forma permette una facile orientazione in fase di montaggio.

L'orificio è protetto dalla particolare geometria dell'ugello.

Gli angoli di spruzzo disponibili sono: 80° e 110°  
 Altri angoli a richiesta.

### Applicazioni

- Lavaggi.
- Raffreddamenti.
- Trattamenti superficiali.
- Lubrificazione.
- Agricoltura.

### Materiali

POM.

### Characteristics

Their particular shape facilitates the ease to set the jet orientation.

Low costs of replacement.  
 The orifice is protected by the particular geometry of the nozzles.

Spray angle available are: 80° and 110°. Other spray angle under request.

### Applications

- Washing.
- Cooling.
- Surface treatment.
- Lubrication.
- Agriculture.

### Material

POM.

### Características

Su forma particular, hace sencillo la orientación de la pulverización.

Reducción de costos de reemplazo.  
 El orificio está protegido por la geometría que tiene.

Los ángulos de pulverización disponibles son: 80° y 110°  
 Otros ángulos bajo pedido.

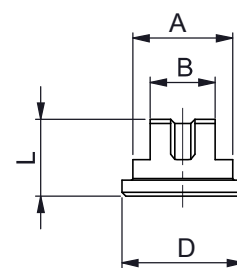
### Aplicaciones

- Lavados.
- Refrigeración.
- Tratamiento de superficies.
- Lubricación.
- Agricultura

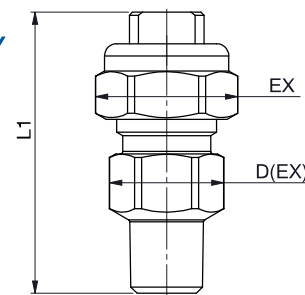
### Material

POM.

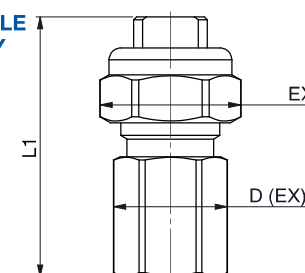
## KC1



### KC1 MALE ASSEMBLY



### KC1 FEMALE ASSEMBLY



### Dimensions tip (mm)

| L   | D    | A    | B   |
|-----|------|------|-----|
| 9,5 | 15,0 | 12,3 | 8,0 |

### Dimensions tip with body (mm)

| Connection | L1 | D (EX) | EX |
|------------|----|--------|----|
| 1/8" M     | 46 | 22     | 17 |
| 1/8" F     | 48 | 22     | 17 |
| 1/4" M     | 46 | 22     | 17 |
| 1/4" F     | 50 | 22     | 17 |
| 3/8" M     | 48 | 22     | 20 |
| 3/8" F     | 50 | 22     | 19 |

| Flow Factor | Diam. Orifice (in.) | US (gpm at 40 psi) | Pressure (Bar) |      |      |      |      |             |      |      |      |      |      |
|-------------|---------------------|--------------------|----------------|------|------|------|------|-------------|------|------|------|------|------|
|             |                     |                    | 0,5            | 0,7  | 1    | 1,5  | 2    | 3           | 4    | 5    | 10   | 15   | 20   |
|             |                     |                    | Capacity (Lpm) |      |      |      |      |             |      |      |      |      |      |
| 01          | 0,66                | 0,10               | 0,16           | 0,19 | 0,23 | 0,28 | 0,32 | <b>0,39</b> | 0,45 | 0,50 | 0,71 | 0,87 | 1,01 |
| 015         | 0,79                | 0,15               | 0,24           | 0,28 | 0,34 | 0,42 | 0,48 | <b>0,59</b> | 0,68 | 0,76 | 1,08 | 1,32 | 1,52 |
| 02          | 0,91                | 0,20               | 0,32           | 0,38 | 0,45 | 0,55 | 0,64 | <b>0,78</b> | 0,90 | 1,01 | 1,42 | 1,74 | 2,01 |
| 03          | 1,1                 | 0,30               | 0,49           | 0,58 | 0,69 | 0,85 | 0,98 | <b>1,20</b> | 1,39 | 1,55 | 2,19 | 2,68 | 3,10 |
| 04          | 1,3                 | 0,41               | 0,65           | 0,77 | 0,92 | 1,13 | 1,31 | <b>1,60</b> | 1,85 | 2,07 | 2,92 | 3,58 | 4,13 |
| 05          | 1,4                 | 0,51               | 0,82           | 0,97 | 1,15 | 1,41 | 1,63 | <b>2,00</b> | 2,31 | 2,58 | 3,65 | 4,47 | 5,16 |
| 06          | 1,6                 | 0,58               | 0,94           | 1,11 | 1,33 | 1,63 | 1,88 | <b>2,30</b> | 2,66 | 2,97 | 4,20 | 5,14 | 5,94 |
| 08          | 1,8                 | 0,81               | 1,31           | 1,55 | 1,85 | 2,26 | 2,61 | <b>3,20</b> | 3,70 | 4,13 | 5,84 | 7,16 | 8,26 |
| 15          | 2,4                 | 1,49               | 2,4            | 2,8  | 3,4  | 4,2  | 4,8  | <b>5,9</b>  | 6,8  | 7,6  | 10,8 | 13,2 | 15,2 |
| 20*         | 2,8                 | 1,98               | 3,2            | 3,8  | 4,5  | 5,5  | 6,4  | <b>7,8</b>  | 9,0  | 10,1 | 14,2 | 17,4 | 20,1 |

\* All the nozzles are available with 80° or 110° of spraying angle, model 20 only 110°