

FB2 - FB2LC - FBB2 - MB2 - MBB2
CONO PIENO AMPIO
WIDE FULL CONE AND LARGE CAPACITY
CONO LLENO GRAN ÁNGULO



Caratteristiche

I tipi BB hanno la testina removibile.
I tipi B sono a corpo unico.
I tipi per grosse portate F-B2 (1) sono in AISI 316.

Characteristics

Types BB have removable caps.
Types B one piece made.
Large capacity types F-B2 (1) S.S. AISI 316 made.

Características

Tipo BB: cabeza intercambiable.
Tipo B: Boquilla de una sola pieza.
Las boquillas tipo F-B2 (1) de gran caudal son de inox 316.

Applicazioni

- Lavaggi.
- Raffreddamenti.
- Abbattimento schiume.
- Antincendio.
- Lavaggio aria e gas.
- Trattamenti chimici.

Applications

- Washing processes.
- Cooling.
- Foam dispersion.
- Fire protection
- Air and gas washing.
- Chemical processes.

Aplicaciones

- Lavado.
- Enfriamiento.
- Aspersión de espumas.
- Protección contra incendios.
- Lavado de aire y gas.
- Tratamientos químicos.

Materiali

Ottone, Aisi303, Aisi316L, altri su richiesta.

Materials

Brass, SS303, SS316L, other on request.

Materiales

Latón, Aisi303, Aisi316L, otros bajo pedido.

Dimensions (mm) FB2 - FBB2

| Connection | D | D(EX) | L | L1 |
|------------|------|-------|------|------|
| 1/8" | - | 14,0 | - | 31,0 |
| 1/4" | - | 17,0 | - | 37,0 |
| 3/8" | - | 21,0 | - | 40,0 |
| 1/2" | - | 25,0 | - | 50,0 |
| 3/4" | 32,0 | - | 56,0 | - |

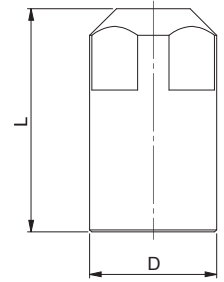
Dimensions (mm) FB2LC

| Connection | D | D(EX) | L | L1 |
|------------|------|-------|-------|----|
| 1"-1/4 | 52,0 | - | 90,0 | - |
| 1"-1/2 | 58,0 | - | 102,0 | - |
| 2 | 75,0 | - | 139,0 | - |

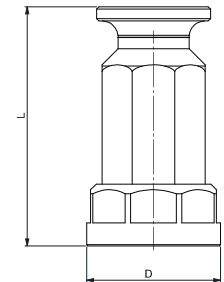
Dimensions (mm) MB2 - MBB2

| Connection | D | D(EX) | L | L1 |
|------------|------|-------|------|------|
| 1/8" | 13,0 | 14,0 | 22,0 | 33,0 |
| 1/4" | 14,0 | 17,0 | 22,0 | 38,0 |
| 3/8" | 17,0 | 21,0 | 30,0 | 45,0 |
| 1/2" | 21,0 | 25,0 | 33,0 | 56,0 |
| 3/4" | 27,0 | - | 40,0 | - |
| 1" | 35,0 | - | 52,0 | - |

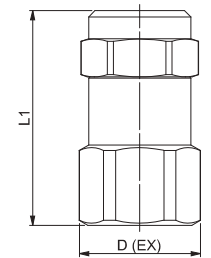
FB2



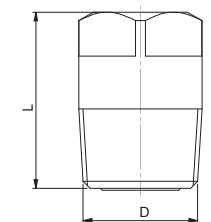
FB2LC (LARGE CAPACITY)



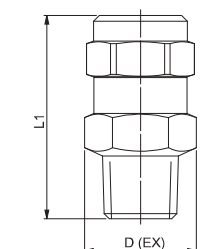
FBB2



MB2



MBB2



FB2 - FB2LC - FBB2 - MB2 - MBB2
CONO PIENO AMPIO
WIDE FULL CONE AND LARGE CAPACITY
CONO LLENO GRAN ÁNGULO



| Connection | Flow Factor | Models/Connections | | | | | Dia. (mm) | Min. Dia. (mm) | US (gpm at 40 psi) | Pressure (Bar) | | | | | | | | Angle <° 3 Bar |
|------------|-------------|--------------------|-----|--------|------|-----|-----------|----------------|--------------------|----------------|-------|-------|--------------|-------|-------|-------|--------|----------------|
| | | Female | | | Male | | | | | 0,5 | 1 | 2 | 3 | 4 | 5 | 8 | 10 | |
| | | FBB2 | FB2 | FB2 LC | MBB2 | MB2 | | | | Capacity (Lpm) | | | | | | | | |
| 1/8" | 2,8 | • | | | • | | 1,5 | 0,8 | 0,51 | 0,8 | 1,2 | 1,6 | 2,0 | 2,3 | 2,6 | 3,3 | 3,7 | 115 |
| 1/8" | 4,3 | • | | | • | | 2,0 | 1,0 | 0,81 | 1,3 | 1,8 | 2,6 | 3,2 | 3,7 | 4,1 | 5,2 | 5,8 | 115 |
| 1/8" | 5,6 | • | | | • | | 2,4 | 1,0 | 1,04 | 1,7 | 2,4 | 3,3 | 4,1 | 4,7 | 5,3 | 6,7 | 7,5 | 115 |
| 1/8" | 8 | • | | | • | | 2,5 | 1,3 | 1,44 | 2,3 | 3,3 | 4,7 | 5,7 | 6,6 | 7,4 | 9,3 | 10,4 | 115 |
| 1/4" | 10 | • | | | • | | 3,0 | 1,6 | 1,82 | 2,9 | 4,2 | 5,9 | 7,2 | 8,3 | 9,3 | 11,8 | 13,1 | 115 |
| 1/4" | 12 | • | | | • | | 3,3 | 1,6 | 2,17 | 3,5 | 4,9 | 7,0 | 8,6 | 9,9 | 11,0 | 14,0 | 15,6 | 115 |
| 1/4" | 14 | • | • | | • | • | 3,7 | 1,6 | 2,53 | 4,1 | 5,8 | 8,2 | 10,0 | 11,5 | 12,9 | 16,3 | 18,3 | 115 |
| 3/8" | 17 | • | • | | • | • | 3,7 | 2,4 | 3,12 | 5,0 | 7,1 | 10,0 | 12,3 | 14,2 | 15,9 | 20,1 | 22,5 | 115 |
| 3/8" | 20 | • | • | | • | • | 4,4 | 2,4 | 3,67 | 5,9 | 8,4 | 11,8 | 14,5 | 16,7 | 18,7 | 23,7 | 26,5 | 115 |
| 3/8" | 24 | • | • | | • | • | 4,5 | 2,8 | 4,36 | 7,0 | 9,9 | 14,0 | 17,2 | 19,9 | 22,2 | 28,1 | 31,4 | 115 |
| 3/8" | 27 | • | • | | • | • | 4,7 | 3,0 | 4,94 | 8,0 | 11,3 | 15,9 | 19,5 | 22,5 | 25,2 | 31,8 | 35,6 | 115 |
| 1/2" | 30 | • | • | | • | • | 5,1 | 3,2 | 5,60 | 9,0 | 12,8 | 18,0 | 22,1 | 25,5 | 28,5 | 36,1 | 40,3 | 115 |
| 1/2" | 35 | • | • | | • | • | 5,9 | 3,2 | 6,36 | 10,2 | 14,5 | 20,5 | 25,1 | 29,0 | 32,4 | 41,0 | 45,8 | 115 |
| 1/2" | 40 | • | • | | • | • | 6,4 | 3,6 | 7,35 | 11,8 | 16,7 | 23,7 | 29,0 | 33,5 | 37,4 | 47,4 | 52,9 | 115 |
| 1/2" | 45 | • | • | | • | • | 6,4 | 4,3 | 8,26 | 13,3 | 18,8 | 26,6 | 32,6 | 37,6 | 42,1 | 53,2 | 59,5 | 115 |
| 1/2" | 50 | • | • | | • | • | 6,7 | 4,3 | 9,20 | 14,8 | 21,0 | 29,6 | 36,3 | 41,9 | 46,9 | 59,3 | 66,3 | 115 |
| 3/4" | 6 | | • | | | • | 9,7 | 4,5 | 12,67 | 20,4 | 28,9 | 40,8 | 50,0 | 57,7 | 64,5 | 81,6 | 91,3 | 115 |
| 1" | 11 | | • | | | • | 13,0 | 5,7 | 23,31 | 37,6 | 53,1 | 75,1 | 92,0 | 106,2 | 118,8 | 150,2 | 168,0 | 115 |
| 1-1/4" | 16 | | | • | | | 15,4 | 6,6 | 34,20 | 55,1 | 77,9 | 110,2 | 135,0 | 155,9 | 174,3 | 220,5 | 246,5 | 115 |
| 1-1/2" | 24 | | | • | | | 18,1 | 10,3 | 50,66 | 81,6 | 115,5 | 163,3 | 200,0 | 230,9 | 258,2 | 326,6 | 365,1 | 115 |
| 2" | 57 | | | • | | | 24,9 | 11,2 | 99,81 | 160,8 | 227,5 | 321,7 | 394,0 | 455,0 | 508,7 | 643,4 | 719,3 | 115 |
| 2-1/2" | 70 | | | • | | | 31,7 | 14,4 | 149,71 | 241,3 | 341,2 | 482,5 | 591,0 | 682,4 | 763,0 | 965,1 | 1079,0 | 115 |